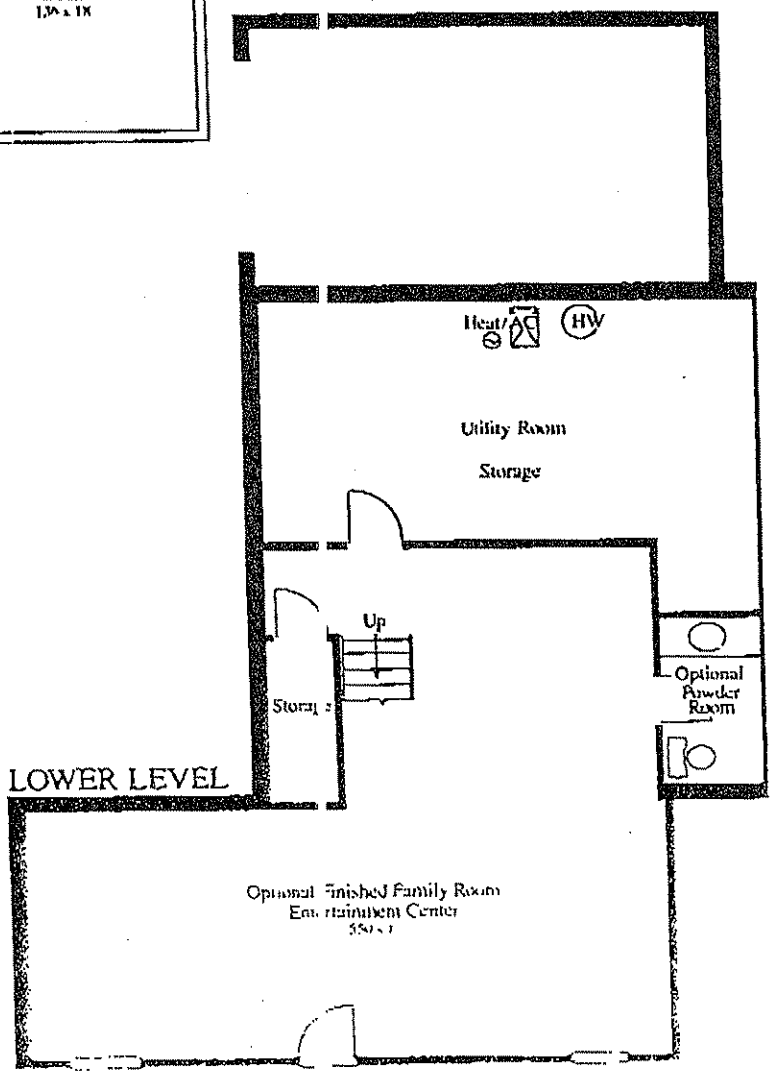
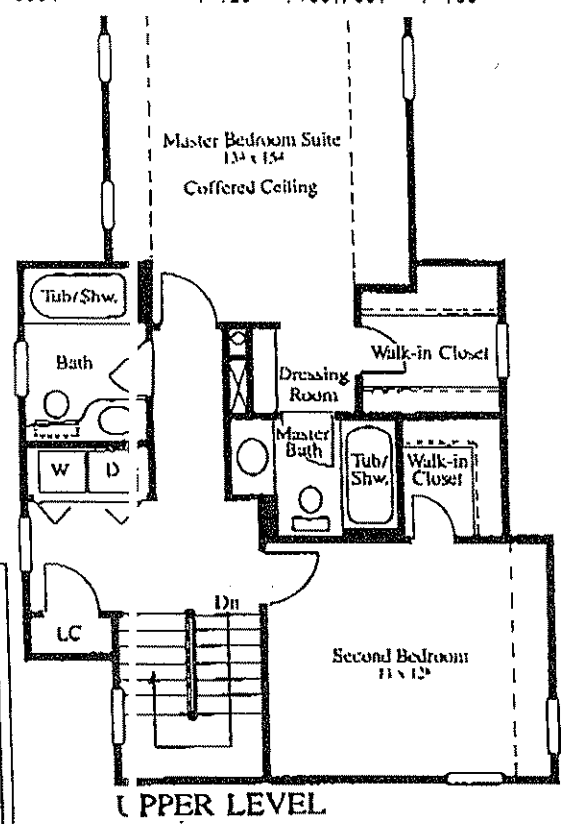
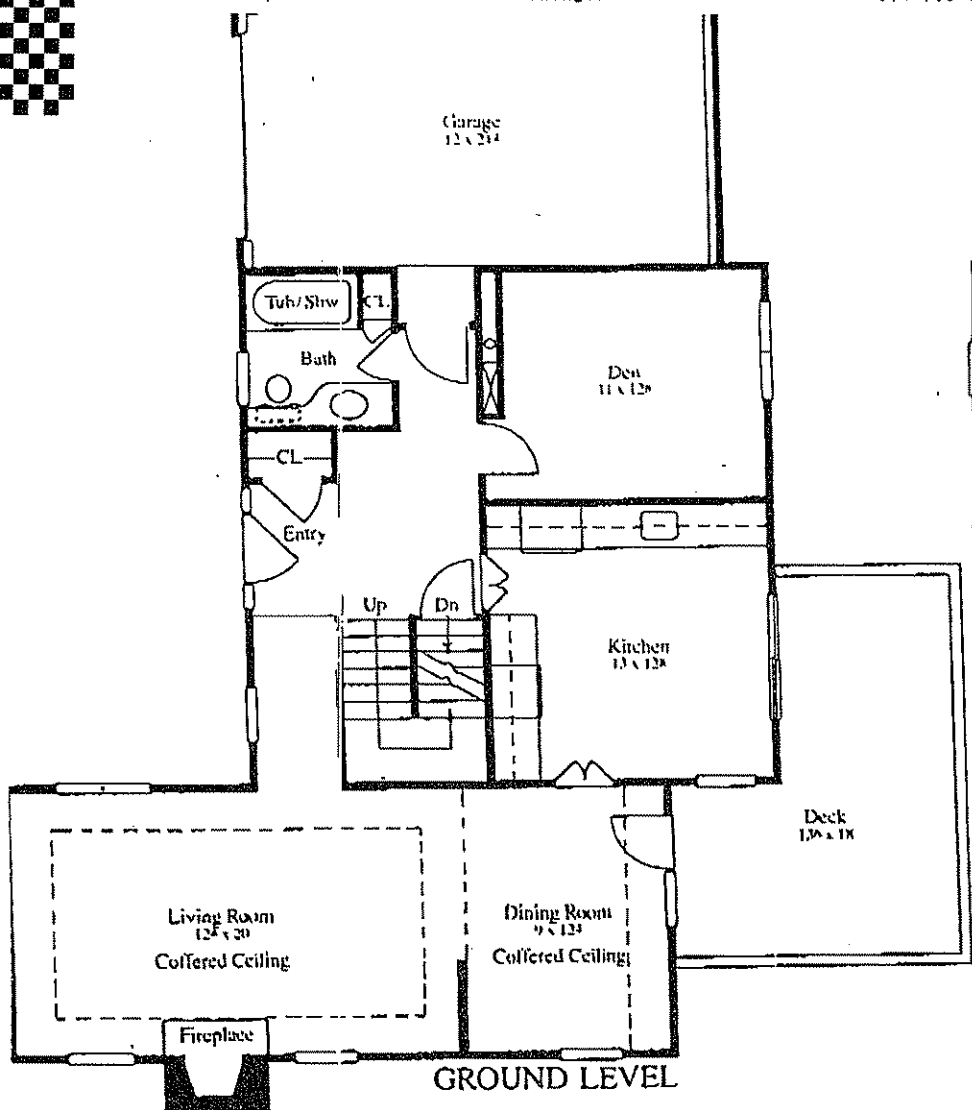
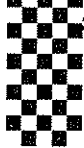


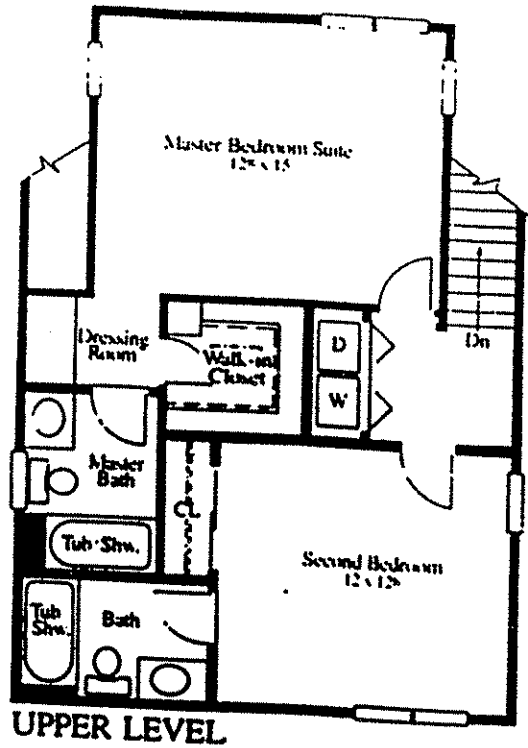
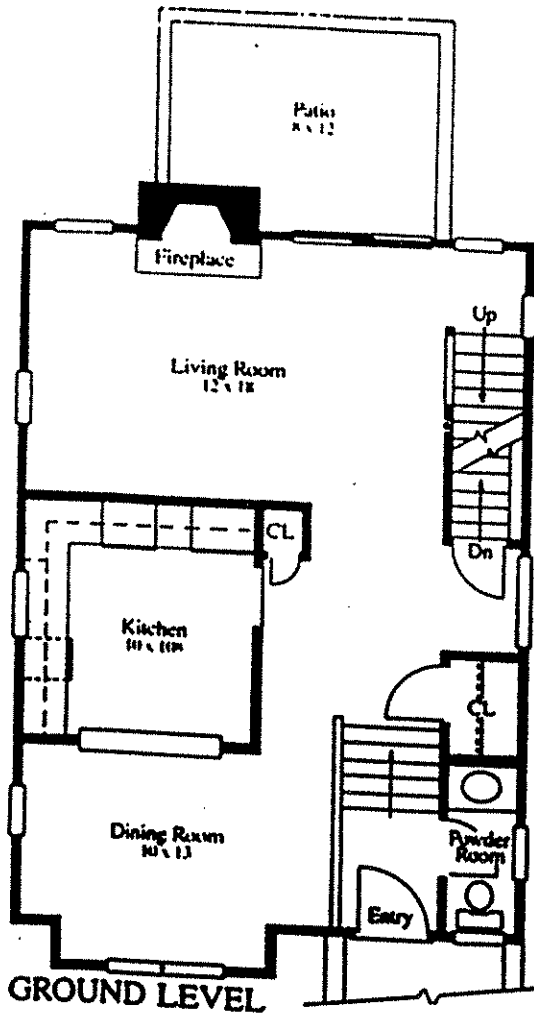
## THE CANTERBURY

A 1408-square-foot, two-bedroom home with two and one-half baths, formal entry and woodburning fireplace. The master bedroom suite is enhanced by a grand Palladian window with coffered ceiling and separate dressing room. The living/dining room has a dramatic cathedral ceiling. A private deck is accessed from the eat-in kitchen and living/dining room through architecturally distinctive sliding French doors, topped by a half-round window. A full basement at the lower level and garage are standard; 320 square feet of the lower level area may be finished as a Family Room/Entertainment Center at additional cost. The Entertainment Center is complete with finished walls, wall-to-wall carpeting, heating/air conditioning and powder room. Additional lower level space provides for a utility room and storage areas. This home is designated by the letter B on the master plans. Some side windows are available only on end home locations.

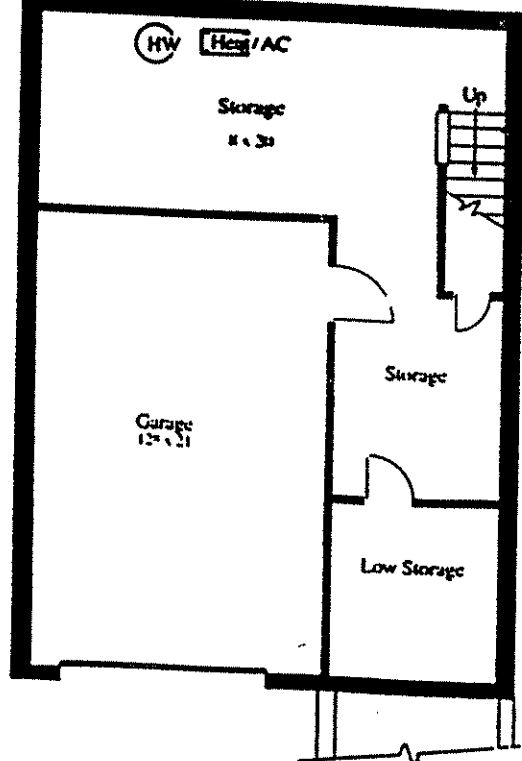


# THE COVENTRY

A 1640-square-foot, two-bedroom home with three baths — providing formal entry, woodburning fireplace, master bedroom suite with separate dressing room, and den. A large deck is reached through double sliding French doors from the eat-in kitchen and formal dining room. The dining, living and master bedrooms have coffered ceilings. A full basement at the lower level and garage are standard; 550 square feet of the lower level area may be finished as a Family Room/Entertainment Center at additional cost. The Entertainment Center is complete with finished walls, wall-to-wall carpeting, heating/air conditioning and powder room. Additional lower level space provides for a utility room and storage area. This home is designated by the letter C on the master plans.



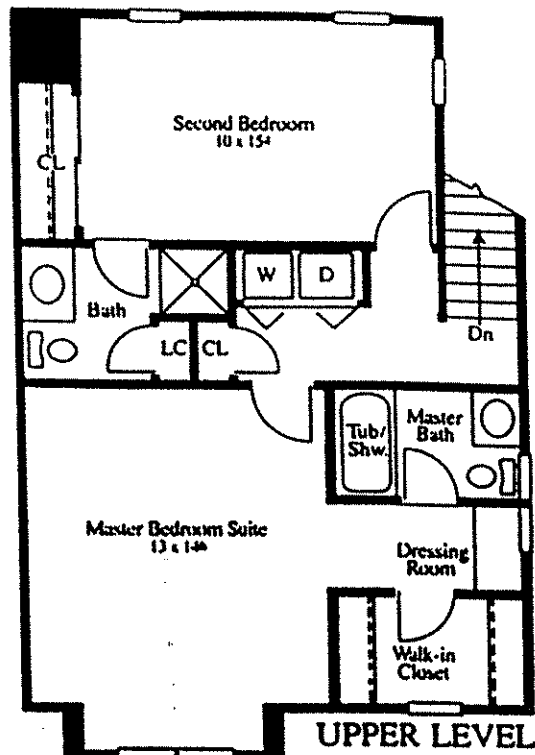
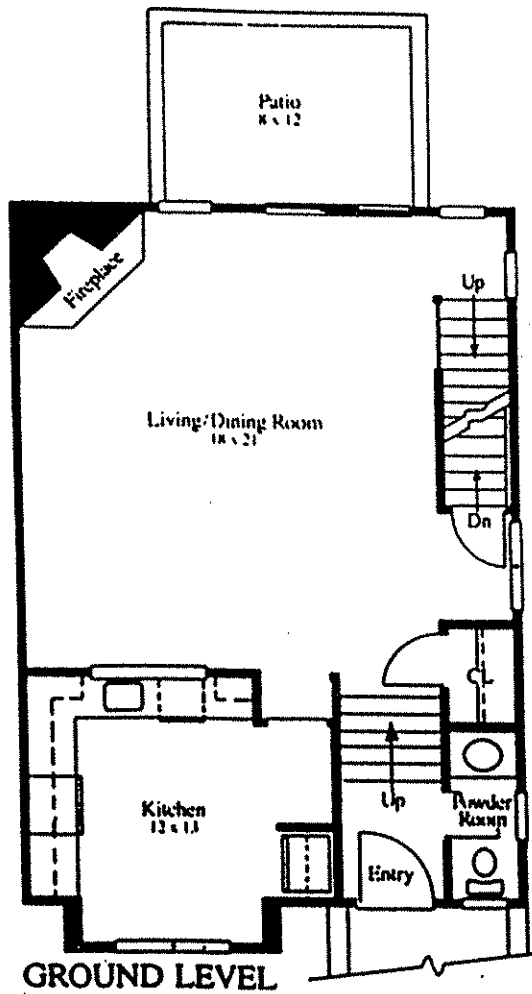
UPPER LEVEL



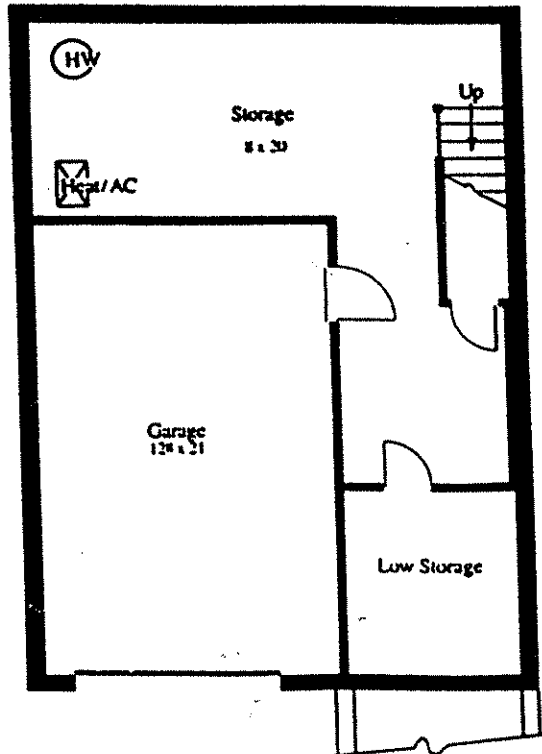
LOWER LEVEL

# THE DURHAM

A 1293-square-foot, two-bedroom home with two and one-half baths, formal entry, woodburning fireplace, master bedroom suite with separate dressing room, and private patio accessed from the living room through sliding French doors. A basement and garage are standard in this home, designated by the letter F on the master plans. Some side windows are available only on end home locations.

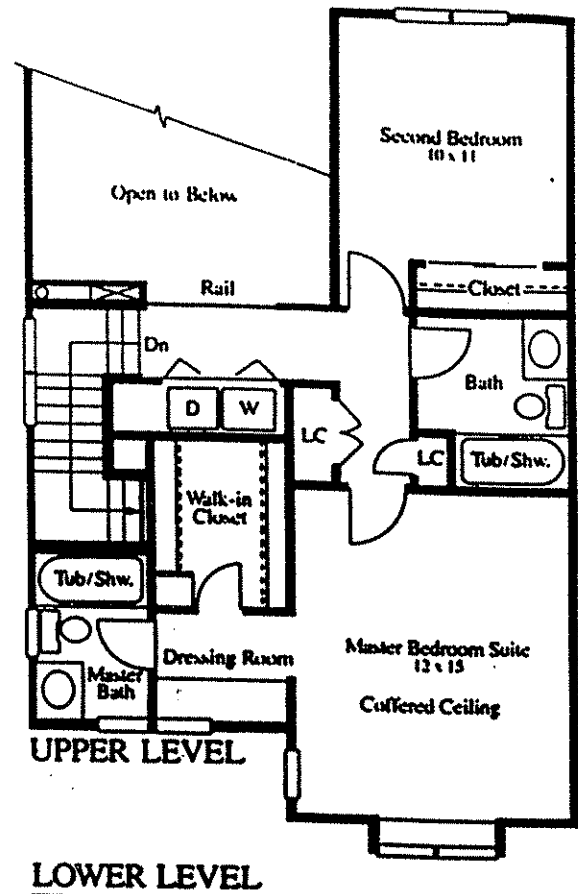
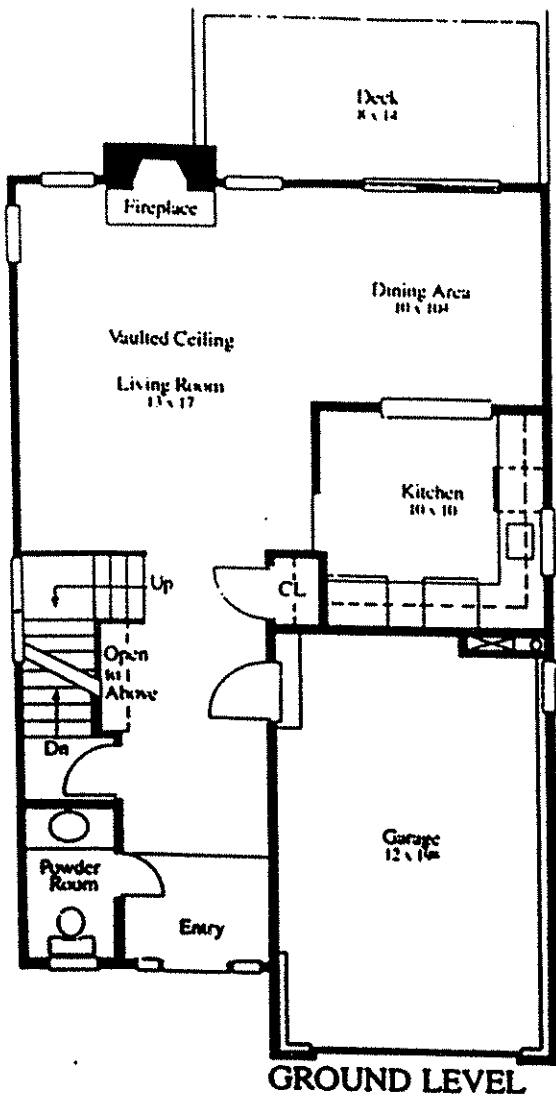


LOWER LEVEL

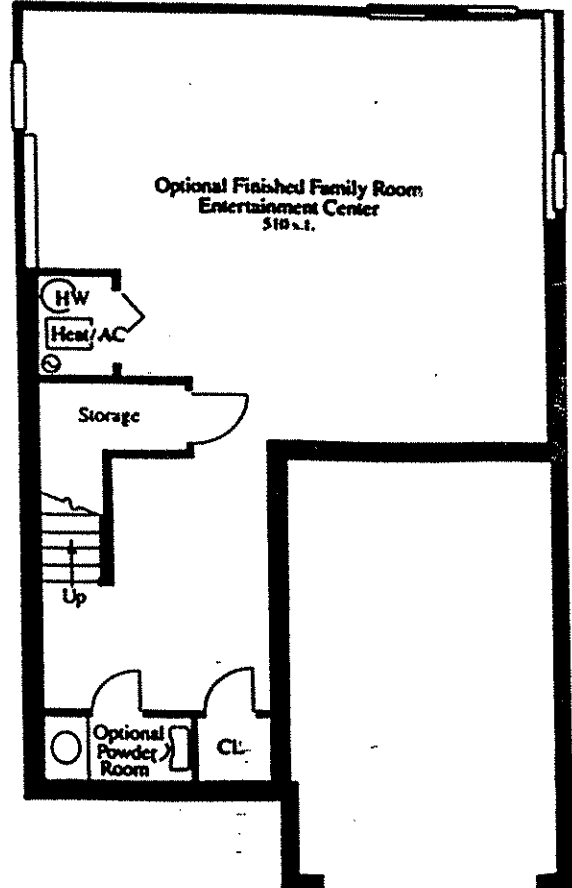


## THE JEFFERSON

1356-square-foot, two-bedroom home with two and one-half baths, formal entry, woodburning fireplace, and master bedroom suite enhanced by a grand and Palladian window and separate dressing area. An unusually large living/dining room opens to a private patio via sliding French doors. A basement: the lower level and garage are standard in this home, designated by the letter E on the master plans. Some side windows are available only on certain home locations.

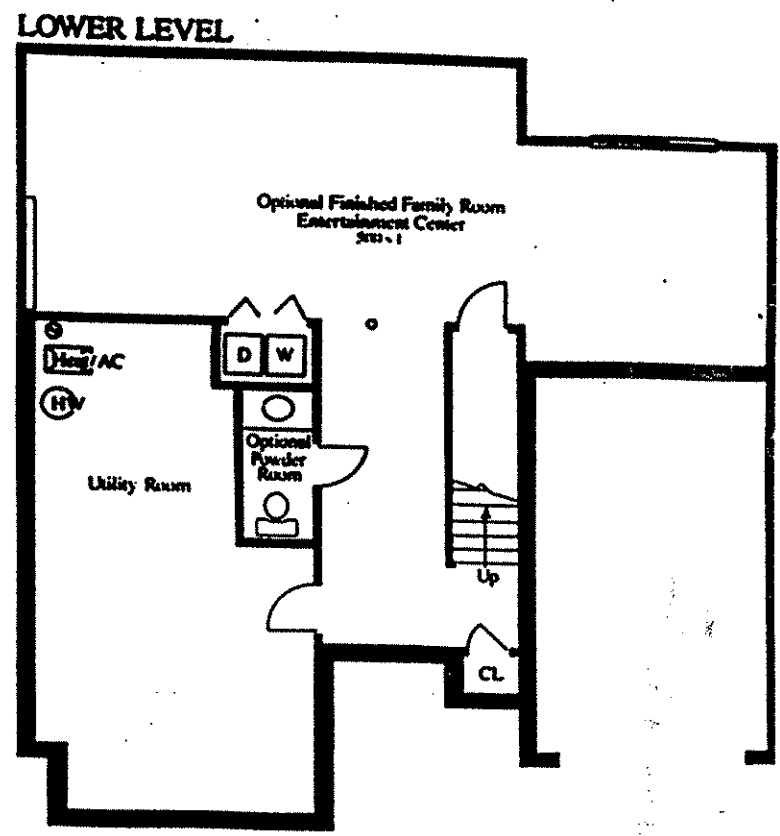
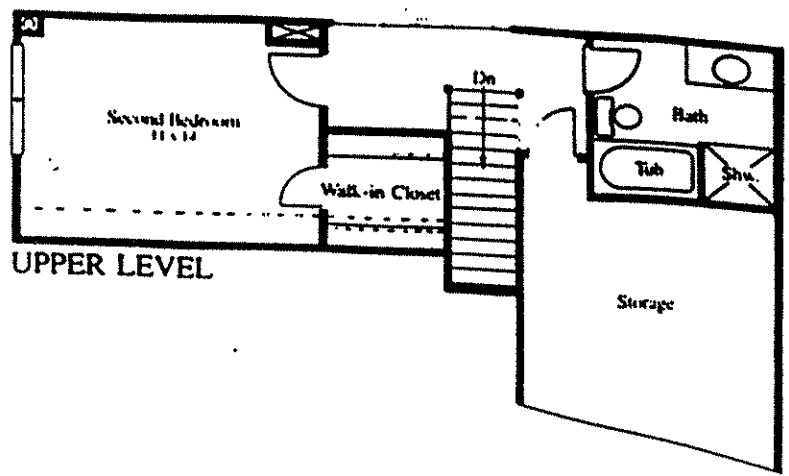
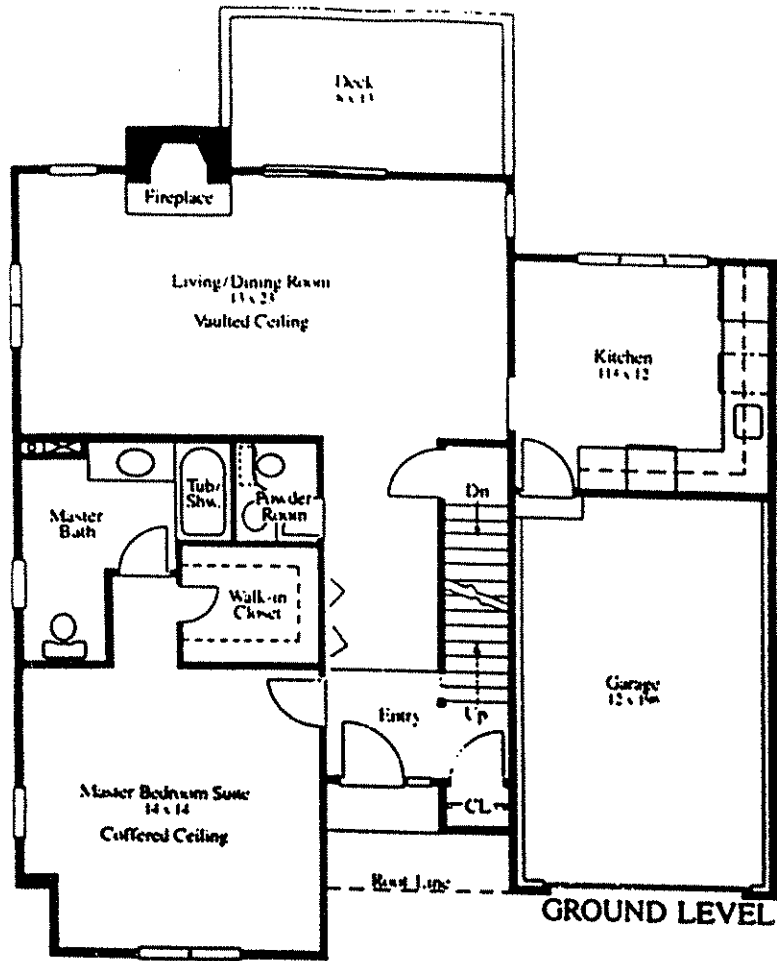


UPPER LEVEL



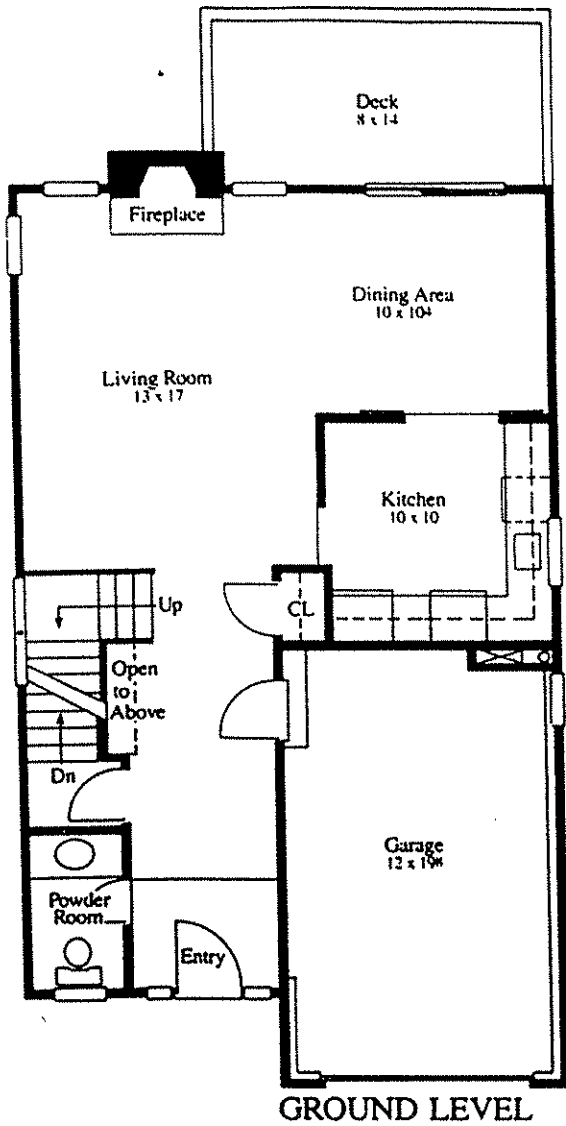
# THE KENSINGTON

A 1300-square-foot, two-bedroom home with two and one-half baths, formal entry, woodburning fireplace, and master bedroom suite with coffered ceiling and separate dressing room. The living room offers a dramatic vaulted ceiling and a private deck accessed from the formal dining area through sliding French doors. A full basement at the lower level and garage are standard; 510 square feet of the lower level area may be finished as a Family Room/Entertainment Center at additional cost. The Entertainment Center is complete with finished walls, wall-to-wall carpeting, heating/air conditioning and powder room. Additional lower level space provides for a utility room and storage areas. This home is designated by the letter A2 on the master plans. Some side windows are available only on end home locations.

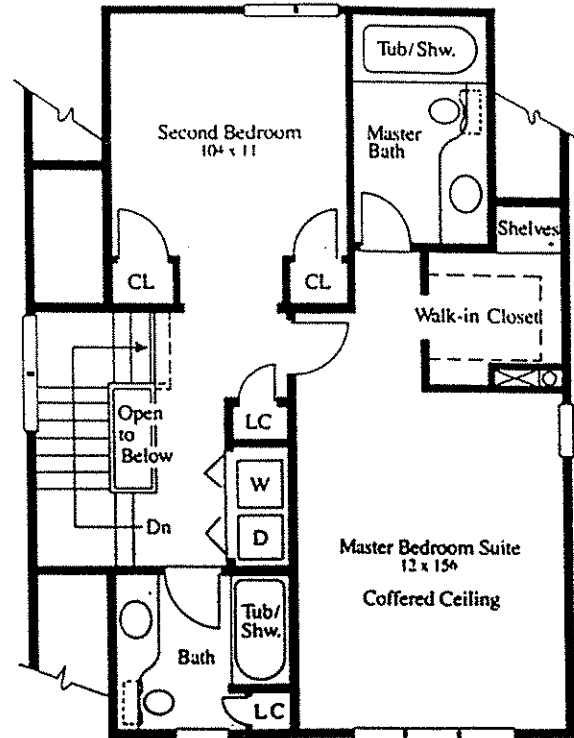


# THE LINCOLN

A 1275-square-foot, two-bedroom home with two and one-half baths, formal entry, and woodburning fireplace — providing a ground level master bedroom suite enhanced by a grand Palladian window with coffered ceiling, and a second bedroom suite occupying the upper level. A private deck is accessed through sliding French doors from a large living/dining room, complete with vaulted ceiling. A full basement at the lower level and garage are standard; 500 square feet of the lower level area may be finished as a Family Room/Entertainment Center at additional cost. The Entertainment Center is complete with finished walls, wall-to-wall carpeting, heating/air conditioning and powder room. Additional lower level space provides for a utility room and storage areas. This home is designated by the letter D on the master plans.

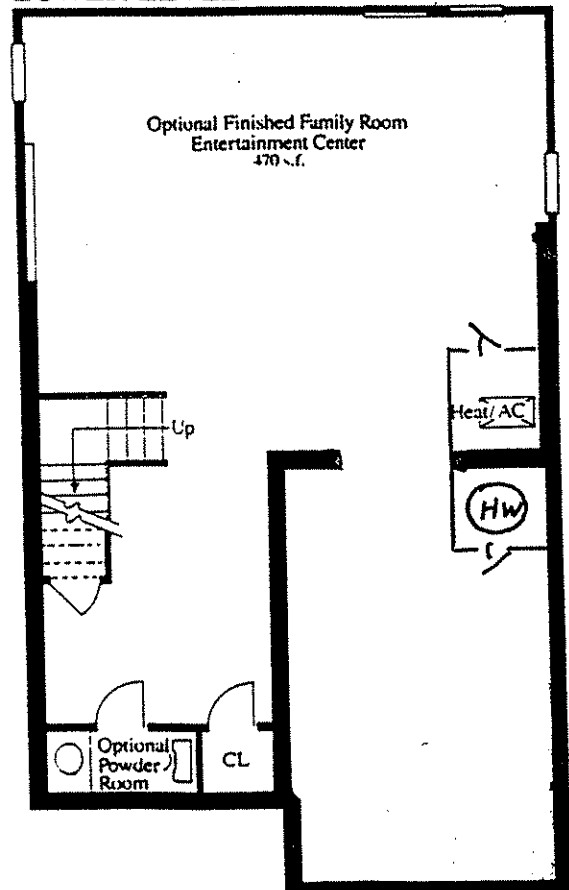


GROUND LEVEL



UPPER LEVEL

LOWER LEVEL



## THE REGENT

A 1331-square-foot, two-bedroom home with two and one-half baths, formal entry, woodburning fireplace, and private deck accessed from a formal dining area through sliding French doors. A full basement at the lower level and garage are standard; 470 square feet of the lower level area may be finished as a Family Room/Entertainment Center at additional cost. The Entertainment Center is complete with finished walls, wall-to-wall carpeting, heating/air conditioning controls, and powder room. Additional lower level space provides for a utility room and storage areas. This home is designated by the letter A<sup>1</sup> on the master plans. Some side windows are available only on end home locations.